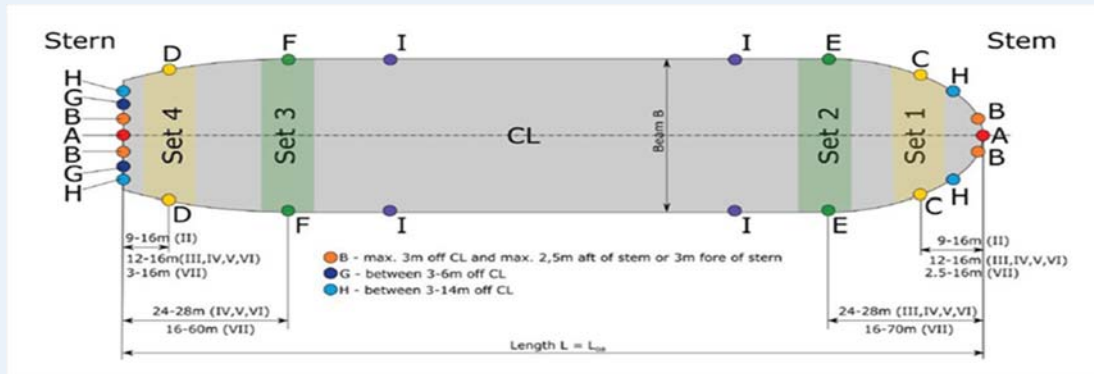


MORDEC DECK FITTINGS for NEW PANAMA CANAL MOORING REQUIREMENTS



Modification requirements for vessels with a length of more than 294.13m or breadth of more than 32.31m intending to transit the Panama Canal through the new extended locks according to ACP notice N-1-2016



REQUIRED ACP DECK FITTINGS FOR VESSELS OF:

ALTERNATIVE 1		45.36T		64T		90T		
Using Position A		Single	Cruciform	Double	Double Bitt	Double	Double Bitt	
Range	Length = L	Beam = B	Chock	Bollard	Chock	Bollard	Chock	Bollard
PANAMAX – Old Locks max. TFW 12.04m								
I	38.10m < L < 60.96m	B < 15.24m	-	-	2A	2A	-	-
II	38.10m < L < 121.92m	15.24m < B < 22.86m	2C+2D	2C+2D	2A	2A	-	-
III	121.92m < L < 173.74m	B < 22.86m	2D+2E	2D+2E	2A+2C	2A+2C	-	-
IV	173.74m < L < 274.32m	B > 22.86m	2E+2F	2E+2F	2A+2C+2D	2A+2C+2D	-	-
V	274.32m < L < 294.13m	B < 32.31m	2E+2F	2E+2F	2A+2C+2D	2A+2C+2D	-	-
NEOPANAMAX – NEW Locks – max. TFW 15.2m								
VII	L > 294.13m	B > 32.31m	-	-	2A+2C+2D	2A+2C+2D	2E+2F+4H+4I	2E+2F+4H+4I

ALTERNATIVE 2		45.36T		64T		90T		
Using Position B		Single	Cruciform	Double	Double Bitt	Double	Double Bitt	
Range	Length = L	Beam = B	Chock	Bollard	Chock	Bollard	Chock	Bollard
PANAMAX – Old Locks max. TFW 12.04m								
I	38.10m < L < 60.96m	B < 15.24m	4B	-	-	4B	-	-
II	38.10m < L < 121.92m	15.24m < B < 22.86m	4B+2C+2D	2C+2D	-	4B	-	-
III	121.92m < L < 173.74m	B < 22.86m	4B+2D+2E	2D+2E	2C	4B+2C	-	-
IV	173.74m < L < 274.32m	B > 22.86m	2E+2F	2E+2F	4B+2C+2D	4B+2C+2D	-	-
V	274.32m < L < 294.13m	B < 32.31m	2E+2F	2E+2F	4B+2C+2D	4B+2C+2D	-	-
NEOPANAMAX – NEW Locks – max. TFW 15.2m								
VII	L > 294.13m	B > 32.31m	-	-	4B+2C+2D	4B+2C+2D	2E+2F+4H+4I	2E+2F+4H+4I

Note: PANAMAX PLUS vessels with L & B as for range I – VI but with draught TFW > 12.04m and less than 15.2m, shall be treated as range VII.

MORDEC DECK FITTINGS:



DK-ACP Mordec Panama Chock
Single AC-ISO 13728 :
SWL 45.36T



DK-ACP Mordec Panama Chock
Single BC-ISO 13728 :
SWL 45.36T



DK-ACP Mordec Double Bitt
Bollard-ISO 13795 :
SWL 64T and 90T



DK-ACP Mordec Pedestal
Fairlead Roller-ISO 13776 :
SWL 45.36T, 64T and 90T

DK-ACP Mordec Panama Chock
Double AC-ISO 13728 :
SWL 64T and 90T

DK-ACP Mordec Panama Chock
Double BC-ISO 13728 :
SWL 64T and 90T



MEP DECK SOLUTIONS PTE LTD
9D Jurong Pier Road, Block 3, #03-01, MEP Building
Singapore 619177
Tel: +65 6262 6860 / Fax: +65 6266 3267
Website: www.mepsystems.com.sg



SIN SENG HUAT (QIDONG) MARINE EQUIPMENT CO. LTD
No.28, Binhai Avenue, Binhai Industrial Park, Qidong
Economic Development Zone, Jiangsu, China 226236
Tel: +86 513 8390 5068 / Fax: +86 513 8390 5800
Website: www.sinsenghuat.com